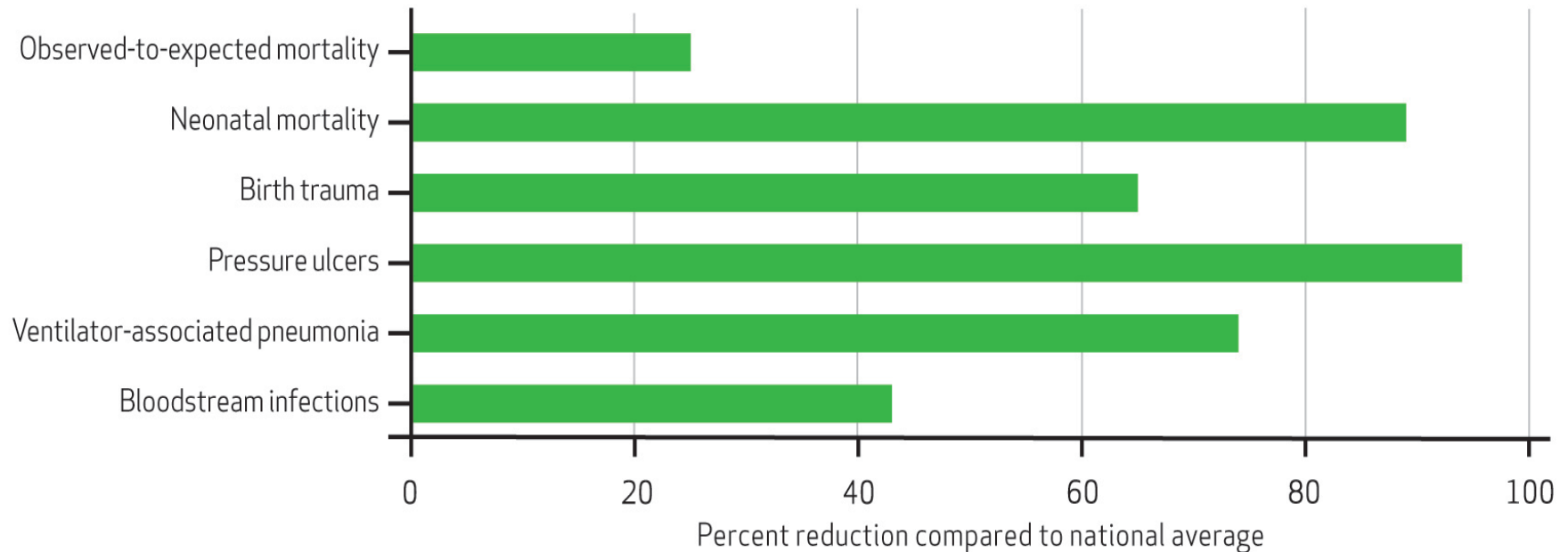


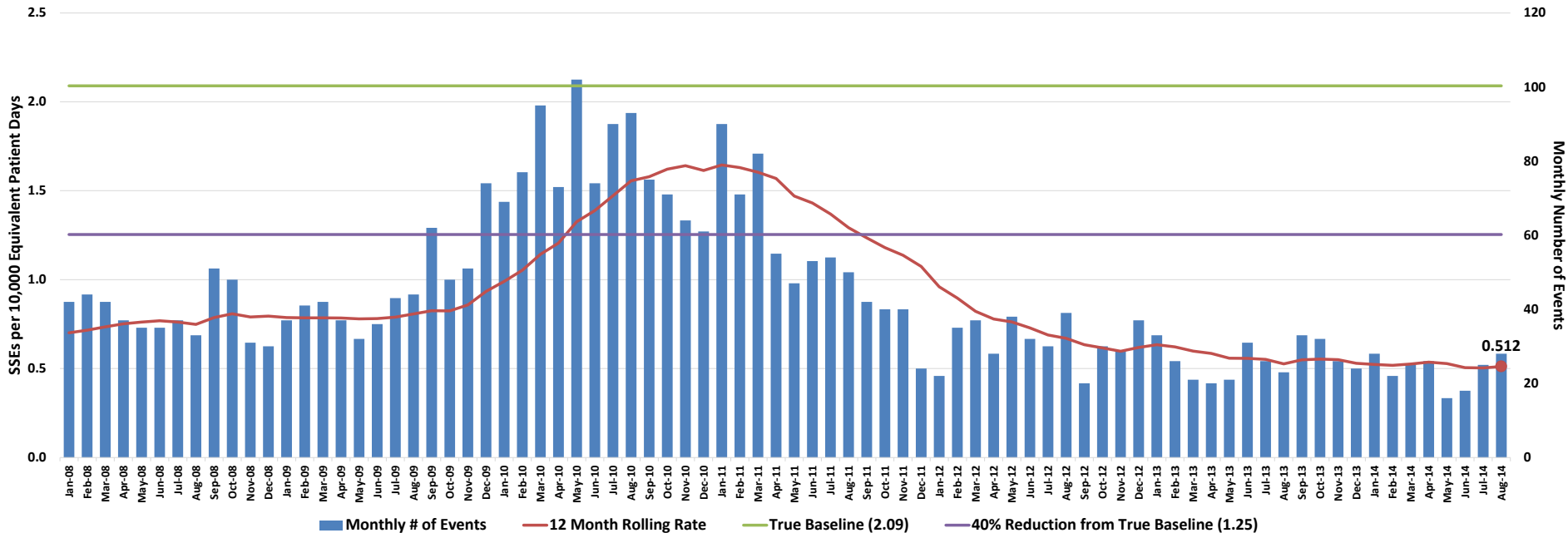
Hospital Performance In The Ascension Health System Compared To National Averages, Fiscal Year 2010



SOURCE Authors' analyses. **NOTES** Measurement of Ascension Health performance July 1, 2009–June 30, 2010. National estimates are the latest available in the literature and other sources of data (data collection methodologies might not be identical). Mortality is based on 2009 data; neonatal mortality and birth trauma, 2005 data; facility-acquired pressure ulcers, 2004 data; ventilator-associated pneumonia and central-line bloodstream infection, 2006–08 data.

“Healing Without Harm by 2014” Becoming a High Reliability Organization

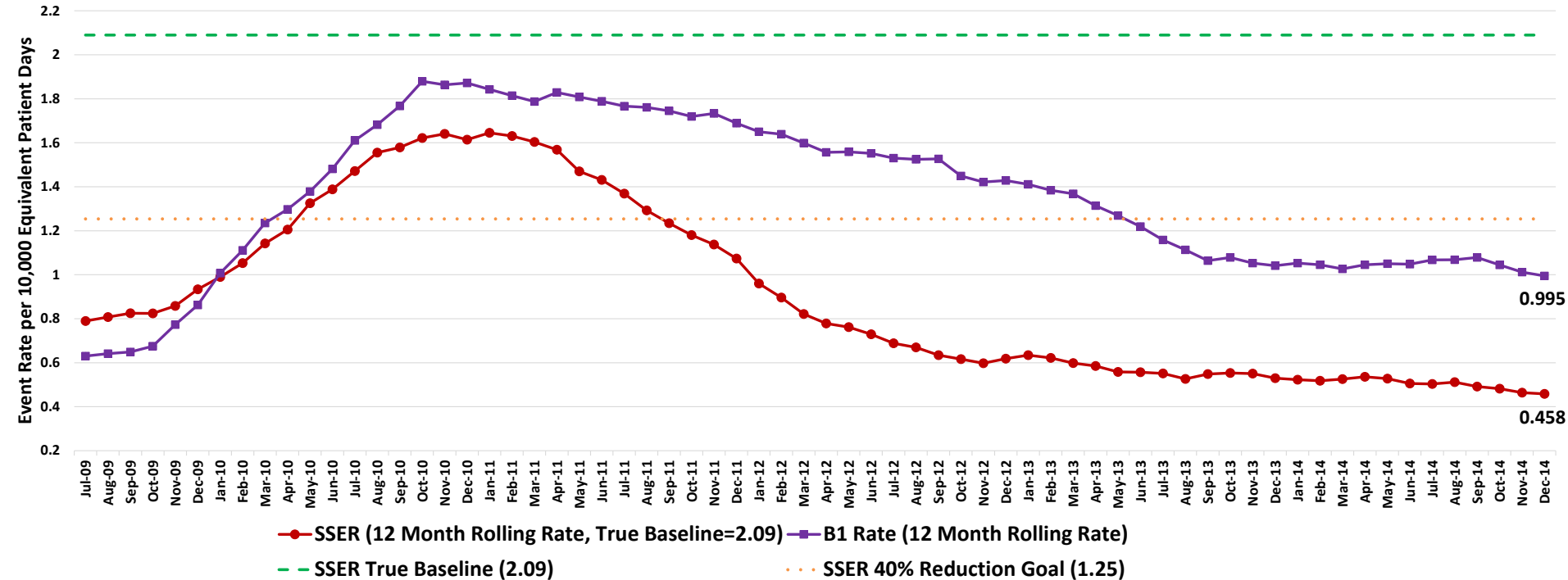
Ascension Health System - Serious Safety Event (SSE) Rate



75 % reduction in serious safety events

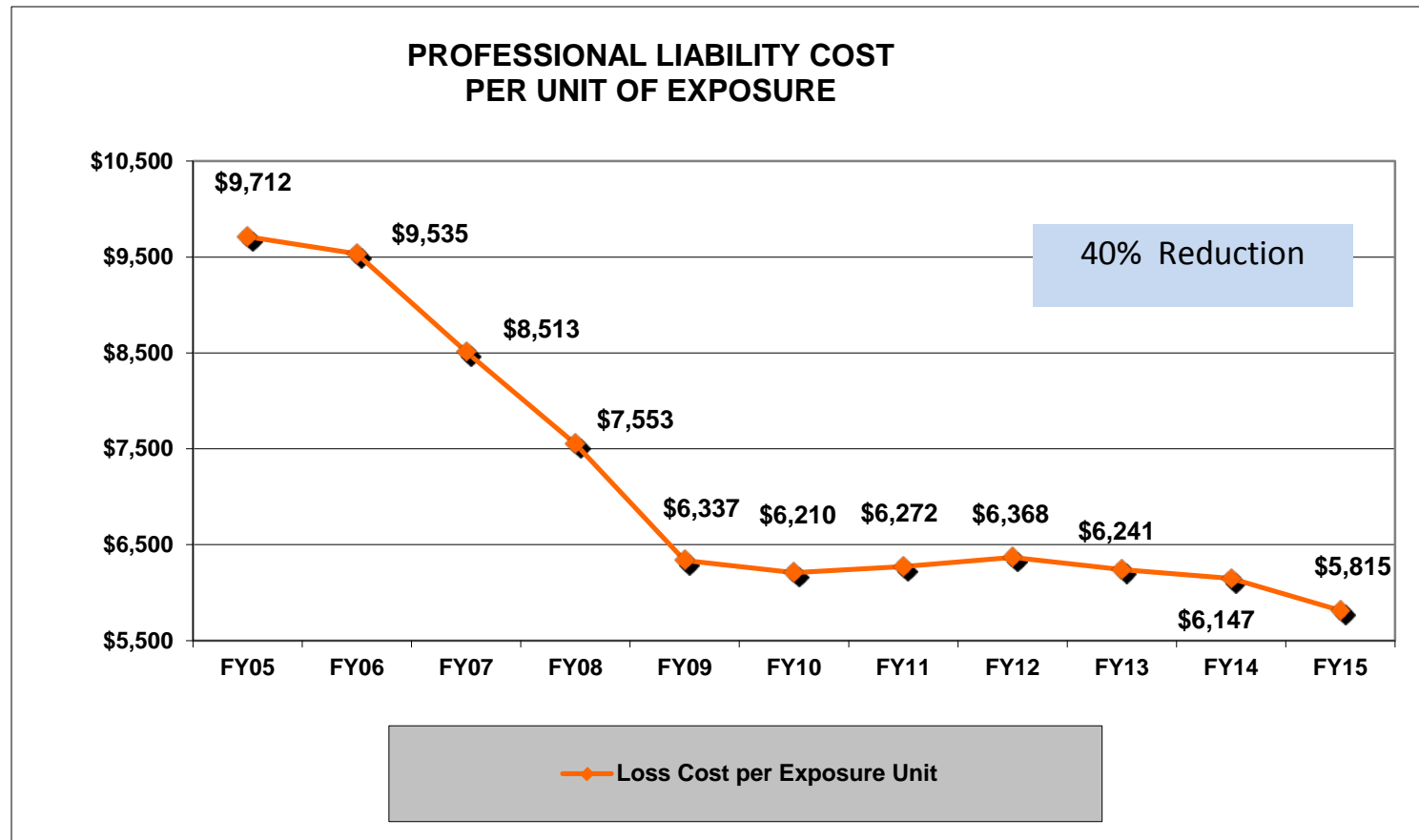
Ascension Health Clinical Quality Improvement

Ascension Health System-Serious Safety Event (SSE) and Basket 1 (B1) Rates



Matched up for concurrent times – Equivalent Basket 1 reduction 65%,
 Serious Safety Event reduction 68% (preliminary analyses)

Professional/General Liability Performance



The Professional and General Liability Program has reduced premium expense by \$396M for Ascension Health since FY05

Mortality Reduction

Lives Saved Each Year Compared to FY 2004 Baseline

